

## Serial to SDI-12 Protocol Converter

The Serial to SDI-12 Protocol Converter (PDS-PC-UNI) has been developed to detect any parameter from an NMEA 0183 data stream or act as an RS485 Modbus Master, and convert it into the more easily digestible SDI-12 protocol.

### Features

- RS485 Modbus Master / NMEA 0183 compatible
- SDI-12 v1.3 compliant
- All SDI-12 data validated
- Low power consumption
- User selectable averaging
- Simultaneous readings of up to 10 serial data stream sentences

By utilising the intuitive configuration utility (Windows® software), the end-user can effortlessly load / save config files to the device. This enables ease of integration with a broad selection of serial-compatible sensors regardless of the parameter being monitored (depth / level, wind speed/direction, rainfall, temperature, humidity etc).

Multiple serial sensors can be streamed into a single data logger / PLC, as multiple protocol converters can operate on the same SDI-12 bus.

With simultaneous readings of up to 10 serial data stream sentences, user-defined thresholds can be set to trigger a control output (e.g. SMS / visual / audible alarm, turn a pump on/off etc) depending on the application.

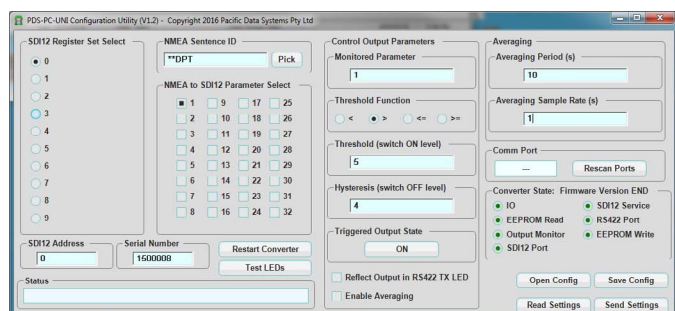
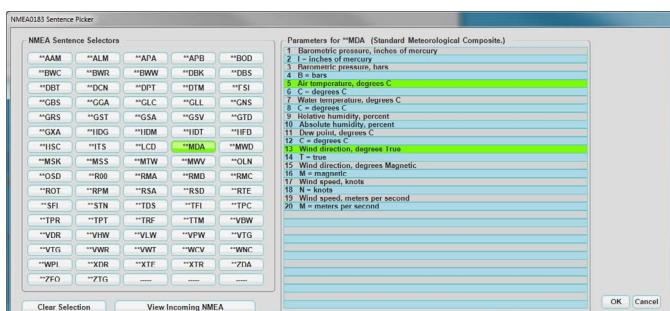
### Conformance

The protocol converter accepts RS485 Modbus Master or NMEA 0183 data stream, parsing the selected parameter readings from the sensor(s) and making these available as SDI-12 values. The converter is fully SDI-12 V1.3 compliant and is capable of providing pass-through power to power the sensor directly.

All data parsed is checked for validity and a known constant value (-1) is output if the data is either invalid or the sensor is not connected, thus making data analysis easy.

### Technical Specifications

Power Requirement:	9-40VDC
Power Consumption:	40mA
Signal Input:	RS485 Modbus (Master) / NMEA 0183
Signal Output:	SDI-12 v1.3
Default SDI-12 Address:	0
Warmup time (until valid data):	<5 seconds



Includes Windows® configuration software