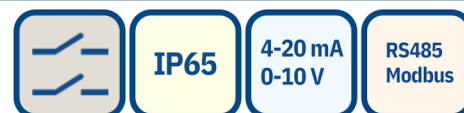


Ethylene Detector-Transmitter E2638-C2H4



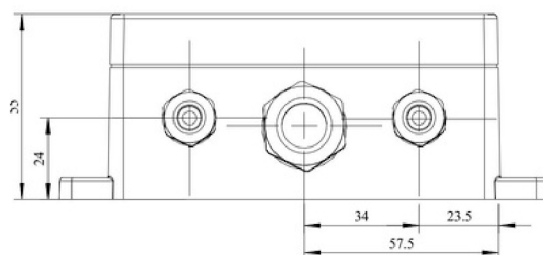
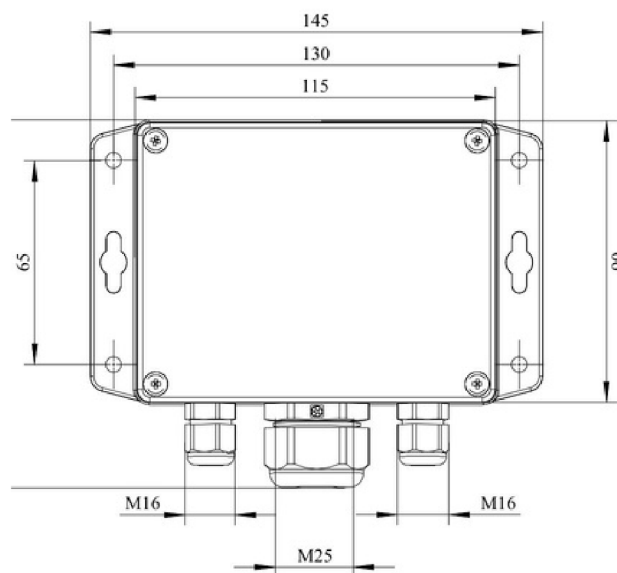
Specifications

Calibration	Carbon dioxide C2H4		
Sensor Type	Electrochemical		
Sampling Method	Diffusion		
Typical Detection Range	0-10ppm	0-200ppm	0-1500ppm
Maximum Overload	20ppm	500ppm	2000ppm
Resolution	0.1ppm	1ppm	1ppm
Response Time	< 60s	<60s	<60s
Signal Update	Every 1 Second		
Maintenance Interval	6 Months		
Sensor Lifetime	> 2 years		
Maintenance Interval	12 months for 50KN		
Self-Diagnostics	Full functionality check at start-up		
Warm-up Time	≤ 1 min		
Power Supply	12 - 36 VDC (default) 24 VAC or 230 VAC as options		
Power consumption	<2 VA		
Digital Interface	RS486, Modbus RTU protocol		
Analog Outputs	2 x 4-20 mA / 0-10 V, user settable		
Output Scale Width	Recommended: 5-100% of the range; >10 x resolution in any case		
Enclosure	Grey ABS plastic, wall mount, protection class IP65		
Dimensions	H90 x W145 x D50mm (housing only) H140 with cable glands		
Operating Environment	Industrial indoor and outdoor locations		
Operating Conditions	-20 - +50°C, up to 100%RH 0.9-1.1 atm; Explosion-safe areas Non-aggressive atmosphere.		

Features

- Accurate and stable measurement
- Easy to install robust enclosure
- Two analogue outputs settable to 4-20 mA r 0-10 V
- RS485 Modbus RTU digital interface
- Relay Option
- Attached or remote sensor
- LCD indicator option

Dimensions



Additional options

Remote sensor probe	Protection IP65, shielded cable default cable length 3.0 m
Self-test button	Triggers both relays simultaneously; push-button switch

Relay outputs

Output relays	2 × SPST relays (closing contact), 250 VAC / 30 VDC, 5 A max
Default alarm set-points	Determined by user within 5-95% of the range

Alarm signalling

Visual	Red and green LEDs
Acoustic	Buzzer 85 dB

LCD indicator

Operating temperature 0...+50 °C

Display dimensions 72 × 36 mm

Number of digits 3.5 7-segment

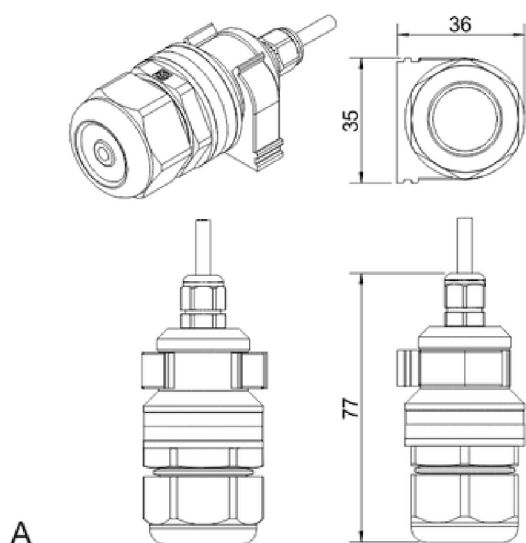
Character height 14 mm

Other features Backlight

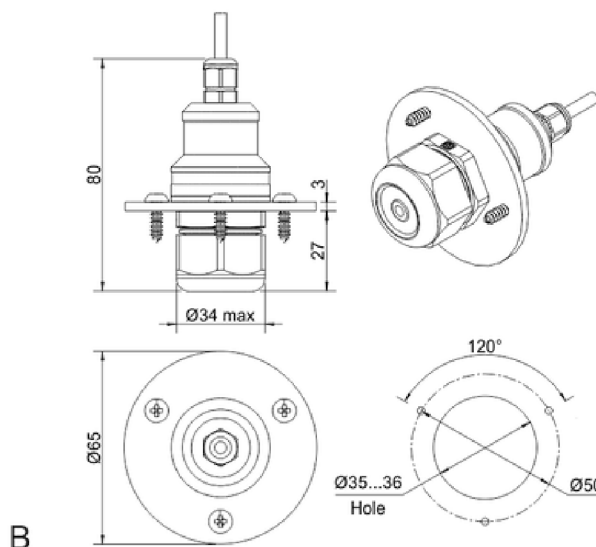
NOTE! Only one analog output is available for a version with LCD.

NOTE! LCD and LEDs can not be chosen simultaneously.

Remote probe



Wall mount remote probe with fixing clamp (default version)



Remote probe with rubber flange and three self-tapping screws (on request)



Remote
Probe



Duct
Mount



LED
Alarms



Integrated
LCD Displays



Remote
LCD Displays



LED Warning
Sign With Alarm

* Emissions Measurement * Drug + Alcohol * Environmental Monitoring * Post Harvest Technology *

Pacific Data Systems Australia Pty Ltd

Address: 27 High Tech Court, Eight Mile Plains, QLD, 4113 Phone: +617 3361 2000 Email: sales@pacdatasys.com.au Web: www.pacdatasys.com.au