

The SalivaTracer™ is a rapid-response device designed for efficient drug detection, requiring only a small saliva sample. Engineered to meet AS4760:2019 standards, it ensures highly accurate and reliable results in just two minutes.



Benefits

DRUG TEST – OBTAIN SAMPLES EASILY AND SAFELY

The SalivaTracer™ 6 oral fluid drug test is a rapid and user-friendly screening tool designed for accurate on-site detection. It includes a built-in saturation indicator that turns red once a sufficient saliva sample has been collected, minimizing user error. Results are fast—readable within two minutes—where a visible test line confirms a negative result and allows for immediate disposal.

Fully verified to the Australian and New Zealand Standard AS/NZS 4760:2019 for oral fluid drug testing, the SalivaTracer™ offers reliable detection across multiple drug panels.

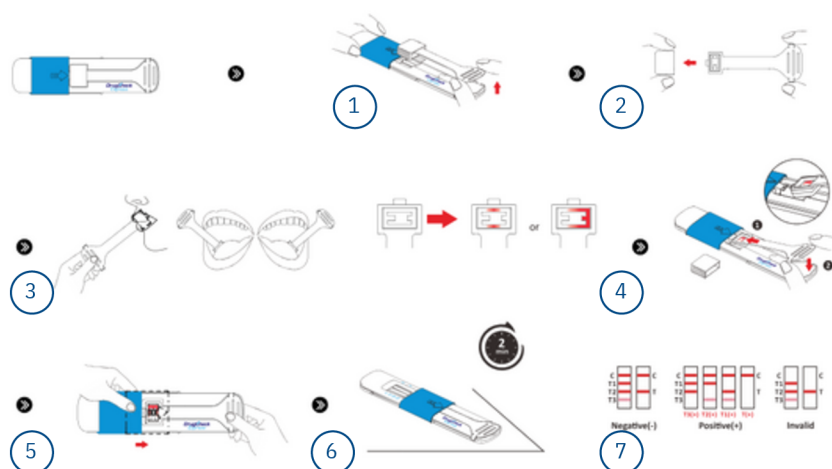
FAST AND SENSITIVE DRUG ANALYSIS

The SalivaTracer™ 6 tests for:

- THC parent 15ng/mL
- Methamphetamines 50ng/mL
- Amphetamines 50ng/mL
- Opiates 50ng/mL
- Cocaine 50ng/mL
- Oxycodone 40ng/mL

UNAMBIGUOUS ON-THE-SPOT DRUG SCREENING

Its compact pocket sized design makes the SalivaTracer™ easy to transport. It can be made ready for use quickly and easily, and is suitable for flexible use applications such as roadside checks and testing in safety- relevant workplaces.



1. Remove the saliva sampling strip from the SalivaTracer™ unit
2. Remove the saliva sample cap from the saliva sampling strip
3. Take the saliva sample using the sampler strip until saturation indicator turns red
4. Insert the sampler strip back into the SalivaTracer™ unit
5. Move the blue cover down to protect the saliva sample in the SalivaTracer™ unit
6. Start the test analysis
7. Read off the test results