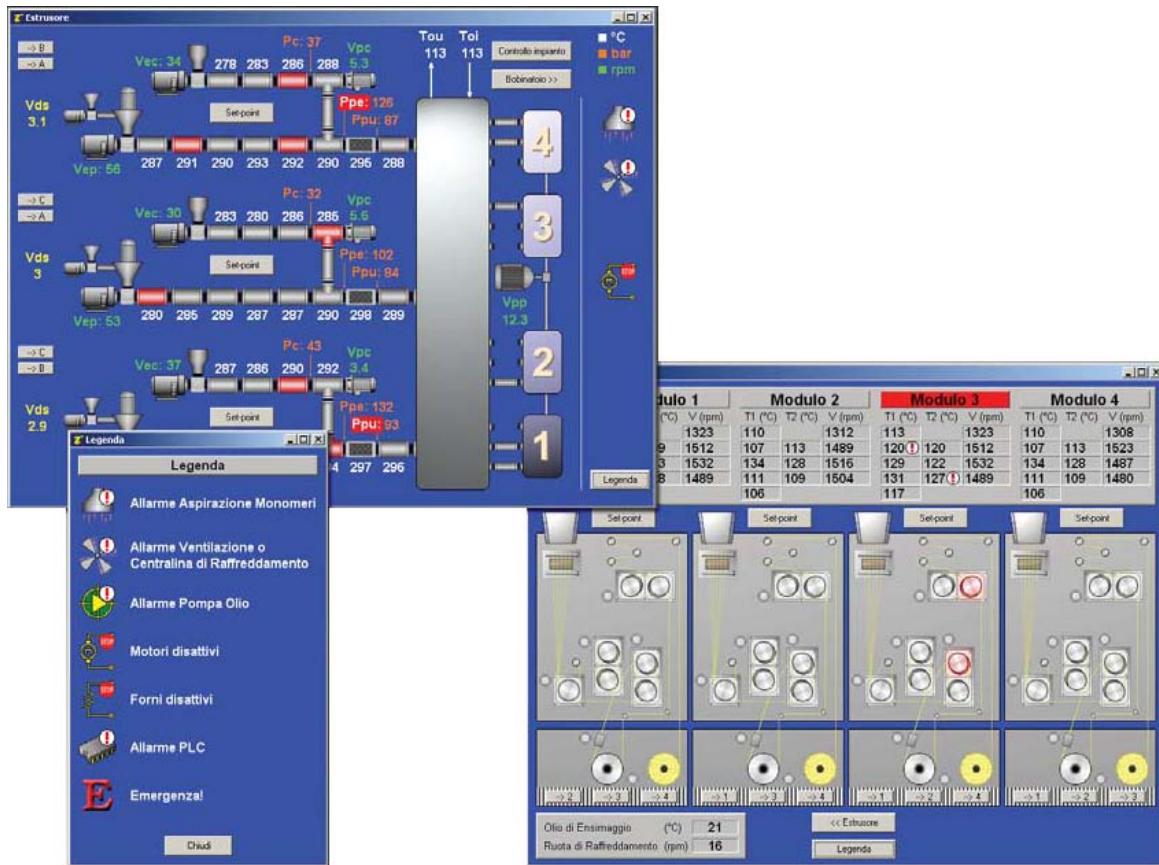




Winlog Applications: Supervisory Control of a Polypropylene Yarn Spinning Plant



Due to the sophisticated manufacturing process for polypropylene yarns, the Winlog supervisory control of the whole manufacturing process makes it possible to produce any colour and to reproduce it consistently - even after many months.

The supervisory system guarantees that all product characteristics (torsions, title, tenacity, stabilization etc) fit perfectly with technical specifications requested by the customer. This allows a product standardisation with a subsequent reduction of production and delivery times.

All phases of the manufacturing process (dosing of polymer and colour, heating, extrusion, stabilisation and final winding with spool automatic change over) are constantly controlled by the supervisory system that, thanks to various serial channels with appropriate protocols, communicates with all control devices (PLCs, temperature and pressure controllers, motor drives, indicators).

The man/machine interface is simple, prompt and effective. It displays plant templates with different levels of detail, gives an immediate signalling of any new alarm or abnormal condition, allows management of working recipes organised by customers or articles and provides quality reports with graphical trends of all significant variables of the process..