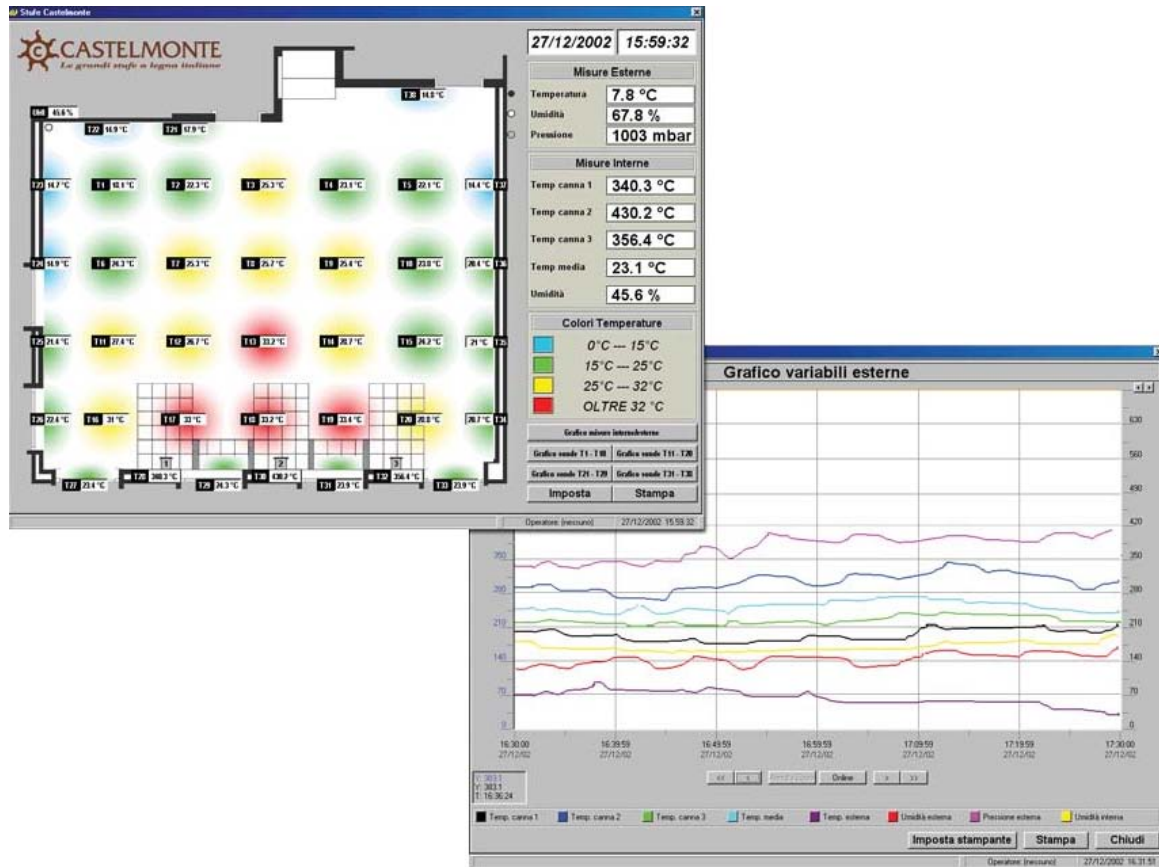




Winlog Applications: Wood Stoves Test System



The system provides the ability to conduct comparative tests on wood stoves working in different environmental conditions. It is built by a SCADA client station and a TCP/IP server linked to a network of data acquisition modules.

In the test room a Pt100 temperature sensor matrix measures the spatial thermal diffusion. In the SCADA system, temperatures are shown as thermographic maps in order to give a first view of the thermal situation. In order to relate temperature distributions with environmental parameters, the data acquisition system has been integrated with internal and external humidity measurements, atmospheric pressure measurements and smoke temperatures measurements.

The system records gathered data, allowing successive analysis. It is also possible to analyse every measurement group trend in time related charts.