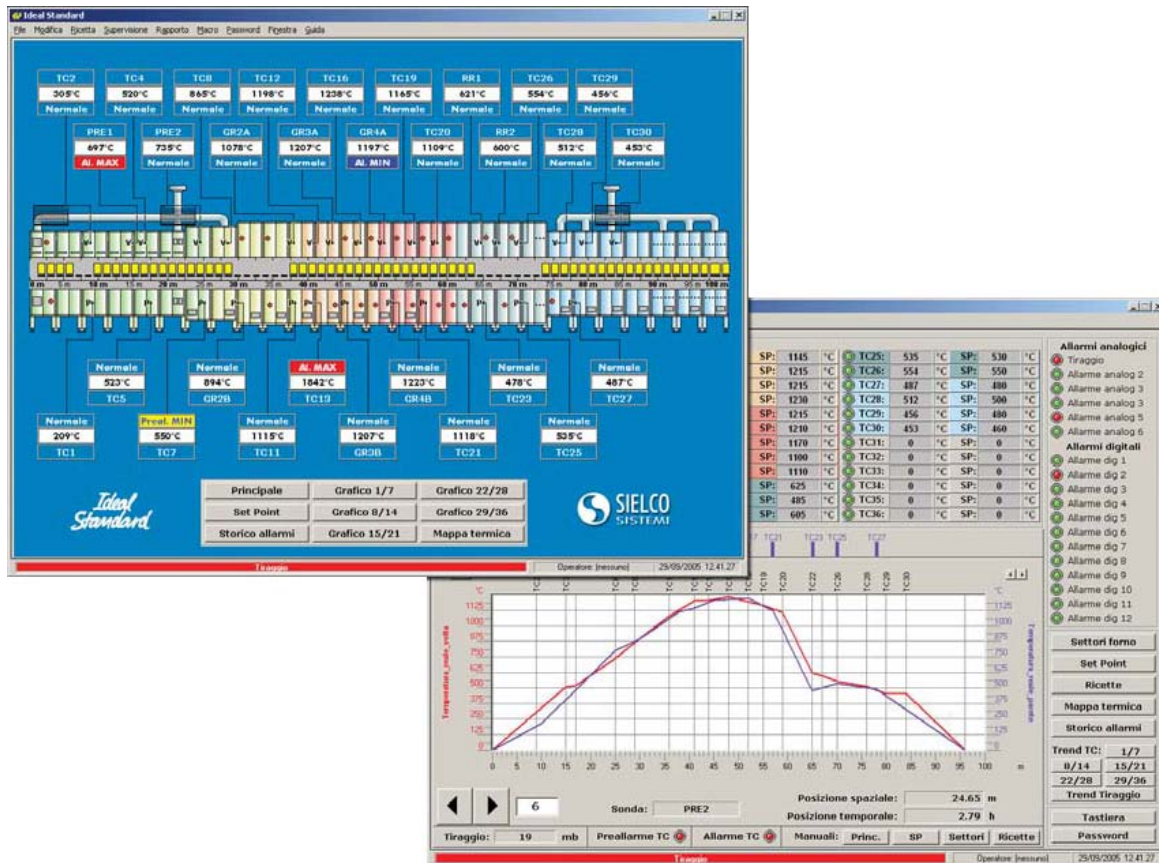




Winlog Applications: Supervisory Control of Brick and Ceramic Kilns



Winlog solutions have been successfully used for the supervision and control of brick and ceramics kilns.

The system allows operators to control process variables (temperature, pressure, dilution) and to analyse them in time related charts. Repeatability and production quality are ensured by production recipes management and batch reports. In continuous kilns applications, it is possible to display current and theoretical product temperature curves in order to immediately verify the quality of the running process. In intermittent kilns applications, it is possible to build the temperature and air dilution curve that the kiln will execute with screen preview. The systems optionally control burners gas and electrical energy consumption, reporting them for each production or part of plant. All systems can be integrated in a TCP/IP protocol network with client/server structure.