

Industrial Wireless Ethernet

Plug & Work with ELPRO 905U-E

Ethernet connectivity without the wiring

The 905U-E is an ideal solution for Ethernet connections in process control and automation applications - PLC's, DCS, SCADA, data acquisition, wireless video ... the 905U-E can handle multiple applications simultaneously.

All in the same unit ...

Maximum flexibility, while saving expensive wiring costs. Each module can be configured as a

- Access Point
- Client/Station
- Bridge
- Router

- 10/100 BaseT Ethernet, wireless data up to 200 Kbits/sec
- *ELPRO's* proven Industrial Strength 900MHz FHSS technology with high immunity to interference

Long and short range applications ...

- range 60 miles (100km), license-free - repeater functionality increases wireless range even further
- excellent penetration in congested industrial environments - over 3000 feet (1 km) through buildings, factory walls and steelwork.

Security, reliability, redundancy ...

- multiple layers of error-detection and correction
- automatic changeover to another Access Point if the wireless link fails
- military-grade AES security encryption of wireless data

Firewall protection and efficient wireless management ...

- secure Firewall protection
- message filtering at MAC address level

Serial interfaces ...

- two serial interfaces, RS232 and RS485
- discrete channel for status I/O, for failure status or external status transfer.

Easy to use configuration and powerful diagnostics ...

- configuration and diagnostics via web-browser
- remote configuration and diagnostics via the wireless link.



905U-E Wireless Ethernet

SPECIFICATIONS

Ethernet

10/100 BaseT RJ45
IEEE 802.3 compliant.
Bridge/router functions work with all Ethernet protocols
Embedded Protocols:
TCP/IP, UDP ARP, PPP, ICMP, HTTP, FTP, TFTP, TELNET

Serial

RS232 V.24 DCE 1.2 to 115.2 Kb/s
RS485 1.2 to 115.2 Kb/s

Discrete I/O

One I/O channel
Input voltage-free contact / Output FET 30VDC 500mA

Networking

Configurable as Access Point or Client, Bridge or Router
Point-to-point, Point-to-multipoint, user configurable addressing
Repeater functionality MAC Filtering - whitelist or blacklist
Serial gateway TELNET

Radio

Frequency hopping spread spectrum
Frequency bands

USA/Canada	902 - 928 MHz
Australia	915 - 928 MHz
New Zealand	921 - 928 MHz

For other countries, refer to ELPRO

Transmit power 0.1 – 1W (20 – 30 dBm) configurable

System gain 140 dB

Receiver sensitivity -108 dBm @ 10⁻⁶ BER

Data rates 19.2, 38.4, 100, 200 Kb/s or auto rate selection

Protocol CSMA/CA with 32 bit CRC and auto-correction

Radio range 60 miles / 100 km line-of-sight using high gain antennas and subject to local conditions (up to 4W ERP permitted in USA/Canada)

Range may be extended using repeater features

SMA coaxial antenna connection

Security

128 bit AES encryption or 64 bit proprietary encryption (configurable)

Data modulation keying MAC Address filtering

Password protected configuration

On-line Configuration and Diagnostics

HTTP with remote configuration via wireless link

RF signal strength, Bit Error Rate, connection monitoring and statistics

PPP Protocol Access to diagnostics

General

Temperature -40 to 140 degF, -40 to +60 degC

Humidity 99% non-condensing

Power Supply 10 – 30VDC

Current Normal 280mA (12V), 150mA (24V)

Transmit (1W) 500mA (12V), 300mA (24V)

Case, heavy duty painted aluminum, DIN rail mounting

Size 4.5 x 5.5 x 1.2 in. / 114 x 140 x 30 mm

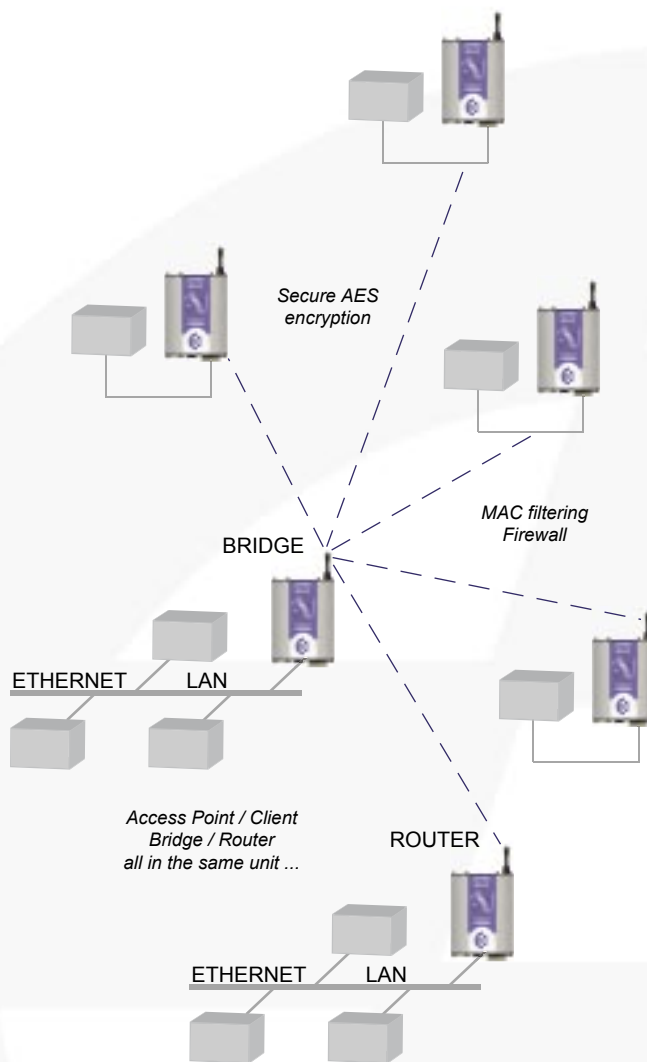
Weight < 0.8 lb / 0.4 kg

Indicators: Power/OK, Radio Rx and Tx, Radio Link, LAN Link/Activity,

Serial Activity, Digital I/O, LAN 10/100Mbit Link

Approvals FCC 15.247, RS210

Hazardous area CSA Class 1 Div 2 (pending)



Supplied by:

Pacific Data Systems Pty Ltd

PO Box 324

Salisbury QLD 4107

TELEPHONE: (+617) 3275 2999

FAX: (+617) 3275 2244

WEB: www.pacdatasys.com.au

E-MAIL: sales@pacdatasys.com.au